



Est. 1967

THINKING OUTSIDE THE BOX WITHOUT LIMITATIONS

55+ Years of  
experience.

Infinite success  
stories.



Metaval is an Australian company that has been a trusted provider of industrial engineering supplies since 1967.

We specialize in in-house design, manufacturing, fabrication, and testing, ensuring the highest quality and efficiency in every project.

Our comprehensive capabilities span across five main divisions: valves, flow measurement, instrumentation, forgings, and castings. Having these divisions under one roof allows us to maintain control over our supply chain, offer competitive pricing, and deliver products with exceptional speed.

With state-of-the-art manufacturing facilities strategically located in Australia, India, and Dubai with offices in the UK and Abu Dhabi. Our global presence ensures we can meet the needs of clients worldwide. Our team of highly trained industry specialists, with over 55 years of experience, is dedicated to providing top-quality products and innovative solutions.

[ We are Metaval ]

Unlocking Our Products & Services: Customised Solutions for Every Requirement

VALVES  
FLOW MEASUREMENT  
FORGINGS  
CASTING  
LEVEL  
TEMPERATURE  
PRESSURE  
THE FLOW LAB

## INDUSTRY APPLICATIONS



OIL & GAS REFINERIES



WATER, WATER TREATMENT & SEWAGE



POWER GENERATION



CHEMICAL PROCESSING



METAL MINING



HVAC SYSTEMS



AGRICULTURE



PAPER & PULP



DEFENCE INDUSTRY



FOOD & BEVERAGE INDUSTRY



NUCLEAR INDUSTRIES



FERTILIZER



MARINE INDUSTRY



FIRE PROTECTION SYSTEMS



WASTE MANAGEMENT

## Why choose us?

**End-to-End Supply Chain Control for Unmatched Quality:** In-House Forging and Casting foundry ensures precision, quality and quick delivery.

**Comprehensive Solutions:** Your all-in-one source for valves, flow meters, level, temperature, pressure, forging, and casting products.

**Tailored Solutions:** We offer customised manufacturing solutions to align with your specific needs.

**Swift Turnaround:** Experience fast and efficient services with our commitment to quick turnaround times.

**Decades of Expertise:** Leverage over 55+ years of industry expertise and continuous innovation.

**Competitive Pricing:** Access competitive pricing without compromising on the quality of our products.

**Exceptional Customer Support:** Receive dedicated and exceptional customer service support throughout your engagement with us.

**Stringent Certifications:** Trust in our adherence to international standards with certifications including ISO 9001:2015, 14001:2015, 45001:2018, and PED.

**Accredited Calibration Lab:** Benefit from our ILAC-MRA/NABL certified Flow Calibration Lab (ISO 17025 certified) ensuring precision and accuracy.

**Qualified Personnel:** Count on in-house ASNT NOT Level III qualified personnel available to address your specific needs.

**Global Presence:** Join our network of over 500 clients worldwide, with products exported to over 40 countries.

## THE FLOW LAB

Certified Flow Calibration Services: Ensuring Accuracy and Compliance

- NABL approved, ISO 17025 : 2017 Compliant
- ISO 4185: 1980 | COR 1 : 1993 Compliant
- India's largest weight tank: 40,000 Kgs
- 5 individual rigs, with 5 different flow rates
- Current Max Flow Rate: 6000m<sup>3</sup>
- Size Range: ¼" to 60"
- Products We Service: Primary Flow Meters, Electromagnetic, Turbine, Ultrasonic, Vortex, Coriolis, Mass, Valves

# Premium Quality Valves: Customisable, Reliable, and Globally Trusted

GATE VALVES • GLOBE VALVES • BALL VALVES  
BUTTERFLY VALVES • CHECK VALVES



## Product Specifications: Valves

Size and Pressure Rating	<ul style="list-style-type: none"> <li>Ball Valve: 1/2" to 24" // Class 150 to 2500#</li> <li>Butterfly Valve: 2" to 48" // Class 150 to 2500#</li> <li>Check Valve: 2" to 48" // Class 150 to 2500#</li> <li>Gate Valve: 1/2" to 24" // Class 150 to 2500#</li> <li>Globe Valve: 1/4" to 24" // Class 150 to 2500#</li> <li>*Large sizes and higher pressure rating on request.</li> </ul>
Manufacturing Processes	Forging and Casting
End Connection	Threaded Socket Weld Flange (RF / RTJ) Butt Weld Wafer (only for butterfly valves) Lugged (only for butterfly valves)

Materials	CS, LTCS, Ductile Iron, SS304/L, SS316/L/H, 321, 410, F5, F11, F12, F22, F91 Duplex, Super Duplex Monel, Inconel Hastelloy, On Request
Design, Testing, End Connection, and Dimensional Standards	ASME, ISO, IS, BS, API AS, DIN, MSS, ANSI, On Request
Design Options	Fire Safe, Cryogenic, Metal/Soft Seated, By-pass arrangement, On Request
Operation Options	Manual Handwheel/Lever, Gearbox, Actuator



## Strainers

Types	Pot, Y, Basket
Size & Pressure Rating	1" to 48" : Class Class - 150# to 2500#
Trim Material	SS 304, SS 316, Duplex, On Request

# Needle Valves, Pressure Gauge Valves & Manifolds

- NEEDLE VALVE
- PRESSURE GAUGE VALVE
- 2 VALVE MANIFOLD
- 3 VALVE MANIFOLD
- 5 VALVE MANIFOLD
- MONO FLANGE



Materials	CS, LTCS, SS304/L, SS316/L/H, Alloy Steels, Duplex, Super Duplex, Monel, Inconel, Hastelloy, On Request
Max Pressure	6,000 Psi , 10,000 Psi
Connection	NPT, BSP, Socket Weld
Packing	PTFE, Grafoil, Viton, On Request

# Accurate Flow Measurement Solutions for Every Industry

## Key Specifications: Flow Products

Design As Per	ISO 5167, ISO/TR 15377, ASME PTC-6, ISA1932, RW Miller
Materials	CS, SS304/L, SS316/L/H, Monel, Inconel, Alloy Steels, Duplex, Super Duplex, Hastelloy, On Request

# ORIFICE

## Types

- Single/Multi Hole Orifice Plate (with optional Flange/Meter Run Assembly)
- Direct Mount Orifice Ring (optional RTD tapping)

## Advantages

- High accuracy
- Relatively more compact and affordable compared to other flow metres
- Easily Replaceable
- Can be installed in a vertical/horizontal inclined pipe
- Wide range of flow rates

\*Higher accuracy is available with flow calibration



# VENTURI

## Types

- Machined
- Classical
- Fabricated
- Steam Jacketed

## Advantages

- Low pressure drop
- High accuracy
- Wide range of applications
- Less straight length required compared to other flow elements

\*Higher accuracy is available with flow calibration

# META BAR

## Types

- Remote mount with Needle Valves (optional RTD tapping)
- Direct Mount with Manifold (optional RTD tapping)
- Online Insertion and Retraction

## Advantages

- Bi-directional
- Cost Effective
- Lowest permanent pressure lost
- Easy installation



# META CONE

## Advantages

- Requires short upstream and downstream straight lengths
- High accuracy

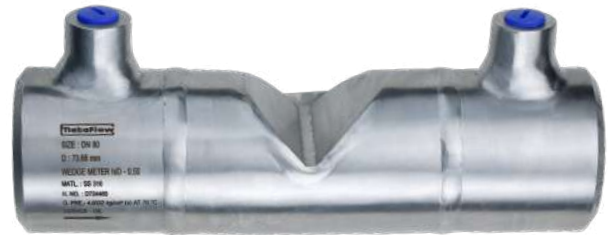
\*Higher accuracy is available with flow calibration

# META WEDGE

## Advantages

- Low permanent pressure loss
- Bi-directional
- Best for slurries or high particle-laden and abrasive mediums

\*Higher accuracy is available with flow calibration



# FLOW NOZZLE

## Types

- Long Radius
- ISA 1932
- PTC-6
- Venturi Nozzle

## Advantages

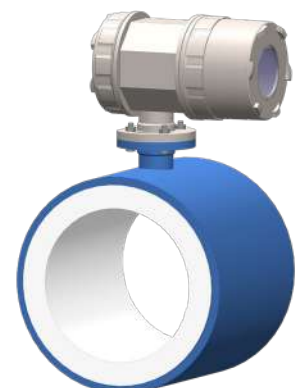
- High accuracy
- Ideal for steam, high temperature and high velocity mediums
- Long lasting
- High accuracy

\*Higher accuracy is available with flow calibration

# MAGNETIC FLOW METER

## Features

- LCD Display
- Multi-language, module design, multi-functional output
- Bi-Directional Measurement
- Easy to Install
- Automatic Alarm Function for self diagnosis



# Forgings that Exceed Expectations: Unmatched Strength and Precision



Materials			
In Carbon Steel: SA105, SA350 LF2 CL.1, CL.2, SA350 Gr. LF3, In Alloy Steel: SA182 F5, F9, F11, F22, F91, in Stainless Steel: 304/L/H, 316/L/H, 321, Duplex, Super Duplex, Inconel & Monel, Hastelloy, On Request.			
PRODUCTS	DIMENSIONAL STANDARD	SIZE RANGE/ MAX OUTER DIAMETER	PRESSURE RATING/ MAX
FLANGES	ASME/ANSI/DIN/API I/AS	1/2" to 60"	150 to 2500 #. / 6.5 MT. Single Piece
WELDOLET, SOCKOLET, OLET	As per customer specification	2200mm	6.5 MT. Single Piece
TUBE SHEETS	As per customer specification	2200mm	6.5 MT. Single Piece
SPECTACLE BLIND & SPACER & PADDLE	ASME/ANSI/B16.48	1/2" to 60"	Class 150 to 2500 #
SELF-REINFORCED NOZZLE	As per customer specification	2200mm	6.5 MT. Single Piece
RING JOINT GASKETS	ASME B16.2/API 6A	2200mm	6.5 MT. Single Piece
STUB ENDS	As per customer specification	2200mm	
RINGS	As per customer specification	2200mm	6.5 MT. Single Piece



# Instruments for Precision: Level, Temperature, and Pressure

## LEVEL

- Tubular Level Gauge
- Reflex Level Gauge
- Transparent Level Gauge
- Magnetic Level Gauge
- Magnetic Level Gauge with Switch
- Magnetic Level Gauge with Transmitter



## TEMPERATURE

- Thermowell
- High Velocity Thermowell (HVT)
- Temperature Gauges
- RTDs
- Thermocouple



# PRESSURE GAUGES

- Bourdon Sensing Pressure Gauge
- Solid Front Pressure Gauge
- Diaphragm Sensing Pressure Gauge
- Capsule Sensing Pressure gauge
- Differential Pressure Gauge
- Hygiene Gauge
- Master / Test Pressure Gauge
- Gauge with External Zero Adjustment
- Pressure Gauge with 40mm, 50mm, 63mm dial, 150mm and 250mm dial

# DIAPHRAGM SEAL

- Flush Diaphragm Seal
- Sandwich type Diaphragm Seal
- Threaded Flush Diaphragm Seal
- Pan Cake type Diaphragm Seal
- Extended Diaphragm Seal



# ACCESSORIES

- Snubber
- Syphon (Pig tail type & U type)
- Gauge Saver
- Gauge Adaptor
- Universal Adaptor
- Gauge Cocks
- Cooling Tower
- Flusing Ring with Needle Valve, Ball Valve, Gate Valve
- Condensate Pot



# PROCESS SKIDS







METAL SEATED GATE VALVE



DOUBLE OFFSET BUTTERFLY VALVE



ORIFICE FLANGE ASSEMBLIES



FLOW NOZZLE



AVERAGE PITOT TUBE



Y STRAINER



RETRACTABLE INJECTION QUILL



METER RUN

## THE FLOW LAB

Certified Flow Calibration Services:  
Ensuring Accuracy and Compliance

- FLOW LAB is NABL approved, ISO 17025 : 2017 Compliant
- ISO 4185 : 1980 / COR 1 : 1993 Compliant
- Fully automated through SCADA system
- India's largest weight tank: 40,000 Kgs
- 5 individual rigs, with 5 different flow rates
- Current Max Flow Rate: 6000m<sup>3</sup>
- Size Range: ¼" to 60"
- Ability of calibrating 5 flow elements on 5 rigs simultaneously
- Products We Service: Primary Flow Meters, Electromagnetic, Turbine, Ultrasonic, Vortex, Coriolis, Mass, Valves



## TESTING CAPABILITIES

Extensive In-house Testing Facilities and Customised Testing Solutions on Demand



- Universal Testing Machine
- Impact Testing Machine
- Hardness Tester
- Profile Projector
- Magnetic Flaw Detector
- Ultrasonic Flaw Detector
- PMI
- Microscope
- Magnetic Particle Test
- Dye Penetrant Testing
- Hydro Testing
- Nitrogen Testing
- Radiography Testing
- Oxygen Cleaning
- Spectro Analysis
- Ferrite Testing
- Helium Leak Testing
- Corrosion Testing



[ CLIENTS ]





Est. 1967

THINKING OUTSIDE THE BOX WITHOUT LIMITATIONS



**Australia**

✉ [info.aus@metaval.com](mailto:info.aus@metaval.com)

**United Kingdom**

✉ [info.uk@metaval.com](mailto:info.uk@metaval.com)

**India**

✉ [info.ind@metaval.com](mailto:info.ind@metaval.com)

**UAE**

✉ [info.uae@metaval.com](mailto:info.uae@metaval.com)